

<b>BASIC</b>	200-240V 50/60Hz	Ra>80		30000h L70 B20	IP65	IK08	-25° +35°C		<b>G3</b>	Risk Group 1
--------------	---------------------	-------	--	-------------------	------	------	---------------	--	-----------	-----------------

art.	W	lm	cd	K		PF	L	L1	L2		8011905	
<b>NEW</b> HBL6001W	40	3450	2680	3000	60°	0,9	606	120	53.2	1250	990503	6
HBL6001N	40	3600	2800	4000	60°	0,9	606	120	53.2	1250	941321	6
<b>NEW</b> HBL12001W	80	6850	5650	3000	60°	0,9	1147	120	53.2	2350	990497	6
HBL12001N	80	7200	5900	4000	60°	0,9	1147	120	53.2	2350	941338	6



<b>PRO</b>	200-240V 50/60Hz	Ra>80		50000h L70 B20	IP65	IK08	-25° +35°C		<b>G5/ h24</b>	Risk Group 1
------------	---------------------	-------	--	-------------------	------	------	---------------	--	--------------------	-----------------

art.	W	lm	cd	K		PF	L	L1	L2		8011905	
HBL6002N	40	3600	2800	4000	60°	0,9	606	120	53.2	1250	941345	6
HBL12002N	80	7200	5900	4000	60°	0,9	1147	120	53.2	2350	941352	6



**DURA**  
LAMP

**Beatrix**

NEW

the **most** beautiful of them all



## HBL - BEATRIX LINEAR HIGH BAY



### BASIC

SIZE:  
60,6 CM E 114,7 CM

COLOUR  
TEMPERATURE  
3000K - 4000K

SERVICE LIFE:  
30000H L70 B20

WARRANTY:  
3 ANNI\*

# 1

### TYPE

Suspension fixture for installations in large commercial and industrial spaces; uses SMD technology.

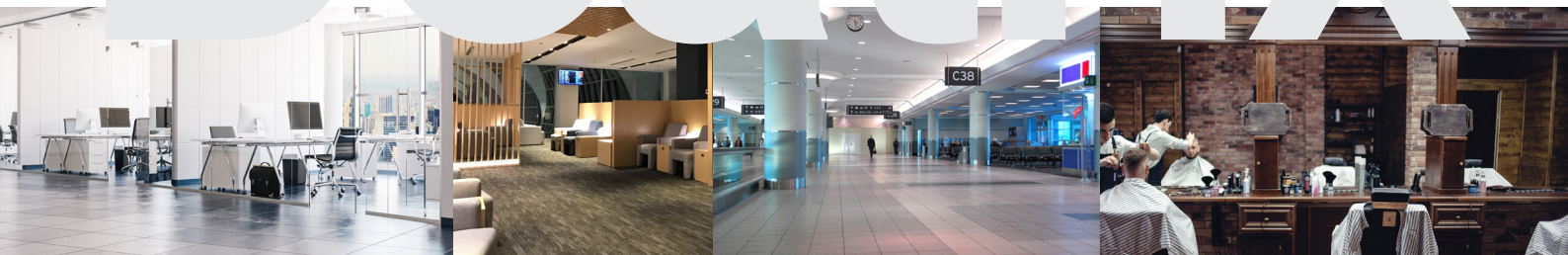
# 2

### CHARACTERISTICS

Fixtures with single optics to maximise flux. The collection is divided into versions with standard drivers and those with Tridonic drivers.



# Beatrix



# 6

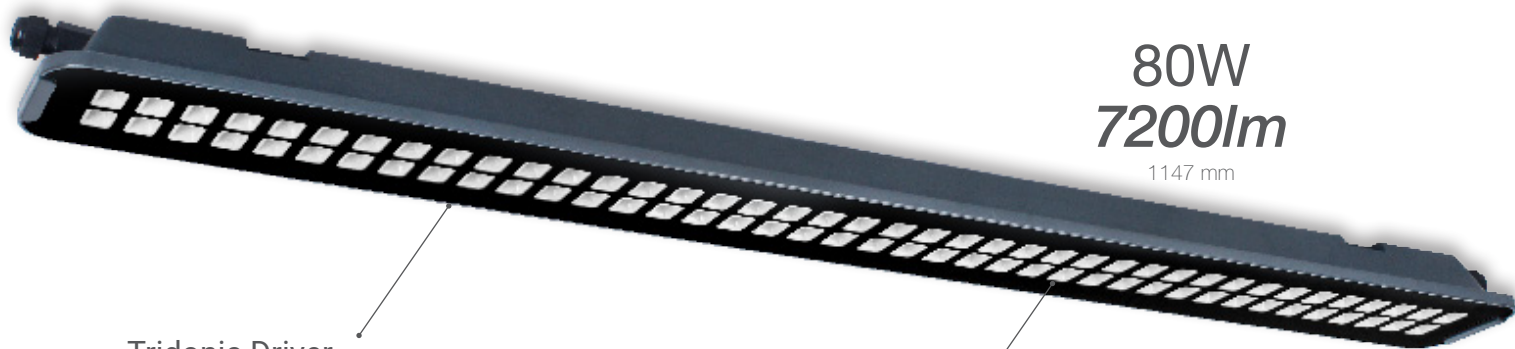
### MOUNTING

Easy cabling using an IP65 connection box attached to the body of the fixture.

TOOLS FREE  
Fast connection

**DURA**  
LAMP





80W  
7200lm

1147 mm

Tridonic Driver

Glass



40W  
3600lm

606 mm

PRO

SIZE:  
60,6 CM E 114,7 CM

COLOUR  
TEMPERATURE  
4000K

SERVICE LIFE:  
30000H L70 B20

WARRANTY:  
3 ANNI\*

3  
4  
5

#### OPTIC

Optical systems composed of micro optics that direct the flux of the LED sources. The LED sources are protected by sealed optics to be used in dusty or dirty environments.

#### MATERIALS

Extruded PC body; glass front screen.

#### CONNECTORS

HBL PRO can be used in series of up to 10 fixtures for the 40W model and up to 6 fixtures for the 80W model.

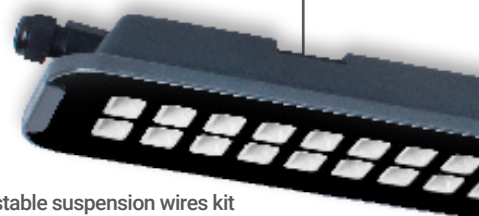
in 7 points



7

#### INSTALLATION

Wall/ceiling installation with the brackets supplied or suspension mounted. The fixture is equipped with a 1m suspension cable. The separate accessory code for suspension installation includes 3m length cables.



Adjustable suspension wires kit